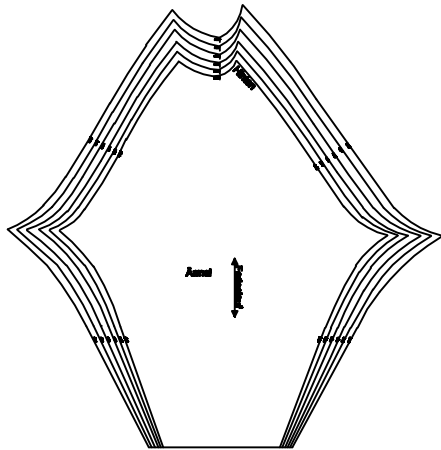
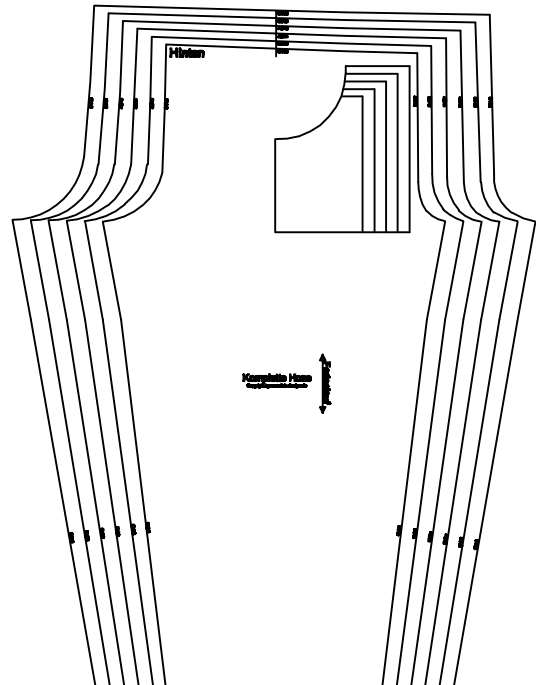


Pyjama Schnittmuster - "Betty"

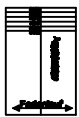
Das E-Book und DIY-Video findest Du in deinem geschützten Schnittmuster Bereich, dazu musst Du dich hier, mit deinen Zugangsdaten einloggen:
<https://www.dots-designs.de/login>



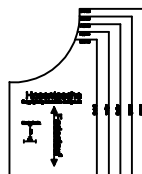
"Ärmel"



Komplette Hose "A"



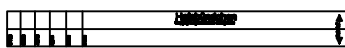
"Ärmelbündchen"



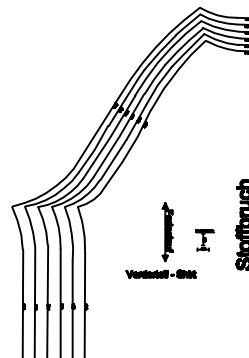
"Hosentasche"



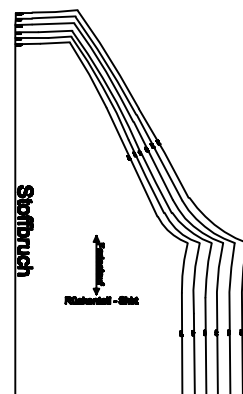
"Saumbund"



"Halsbündchen"



"Vorderteil - Shirt"



"Rückenteil - Shirt"



"Knöchelbündchen"

Mehr DIY Tutorials findest Du unter: www.dots-designs.de

Größentabelle

Fertige Schnittmaße OBERTEIL	34/36	38/40	42/44	46/48	50/52	54/56
Oberweite in cm	114	123	131	140	148	157
Hinten Mitte (Rückenlänge) in cm	67	68,4	69,5	70,7	71,8	72,8
Ärmellänge in cm	67,7	68,7	69,9	71,3	72,7	74

Fertige Schnittmaße HOSE	34/36	38/40	42/44	46/48	50/52	54/56
Bundweite in cm	82	92	102	112	122	132
Seitenlänge in cm	110,4	111,7	113	114,3	115,6	116,9

Hinweise:

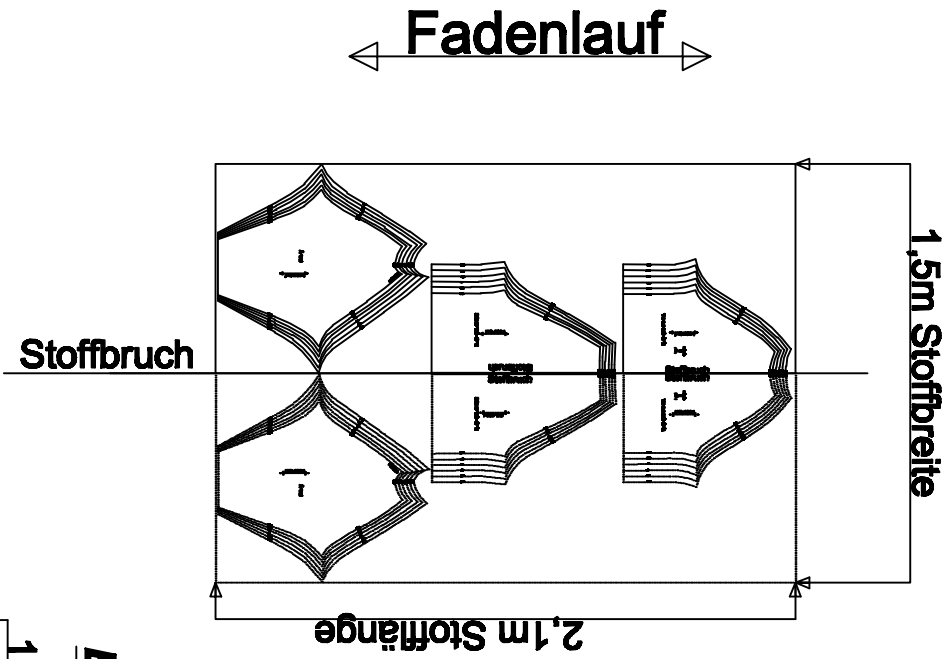
In diesem Schnittmuster ist bereits 1cm Nahtzugabe enthalten!

Aber die hier angegebenen Maße sind natürlich dann ohne Nahtzugabe. :)

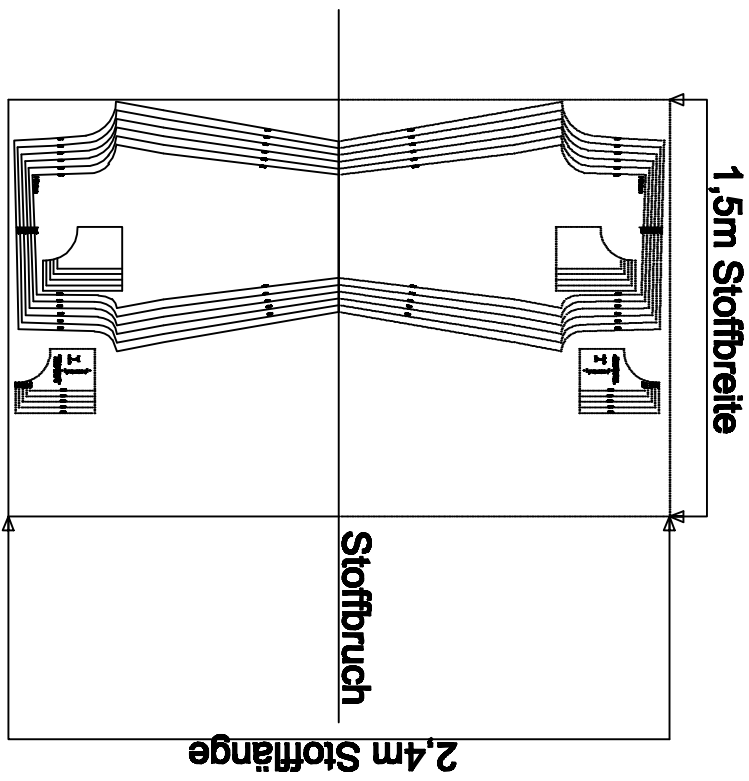
Wenn Du das Schnittmuster zusammen geklebt hast, kannst Du zum Papier Sparen, deine Größe nochmal auf ein anderes Stück Papier abpausen.

Ausschneide Beispiele und Stoffverbrauch!

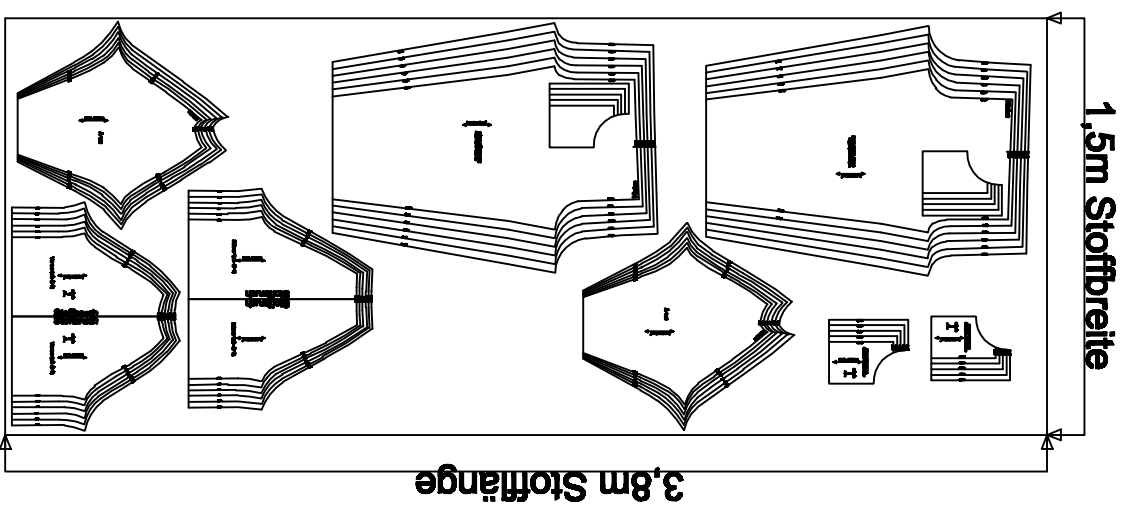
Oberteil / Shirt



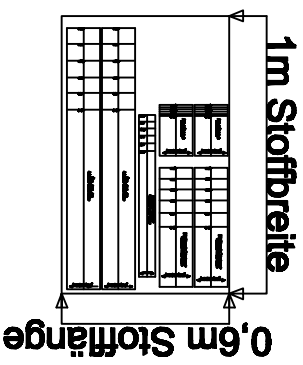
Hose

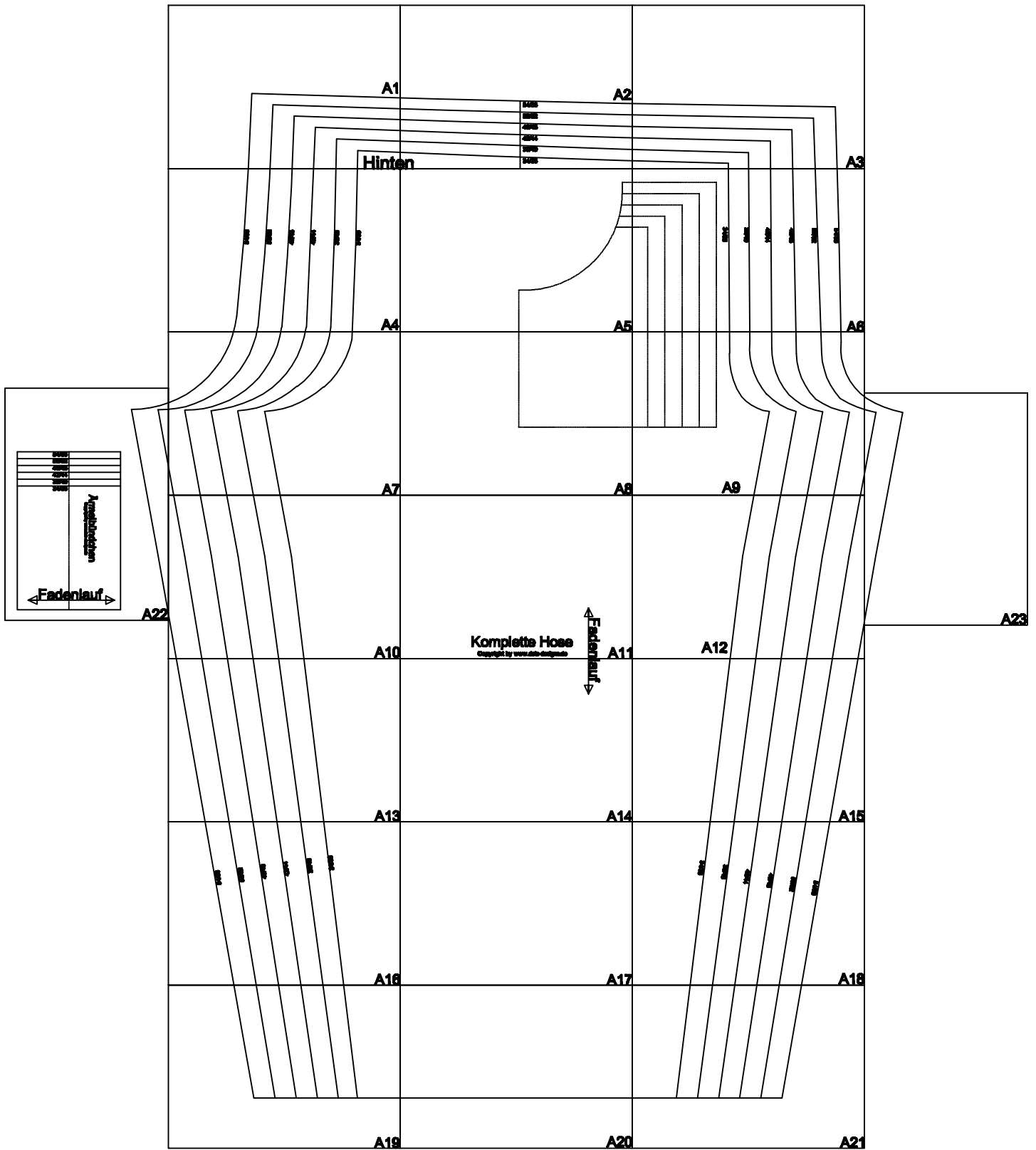


Alle Schnitte

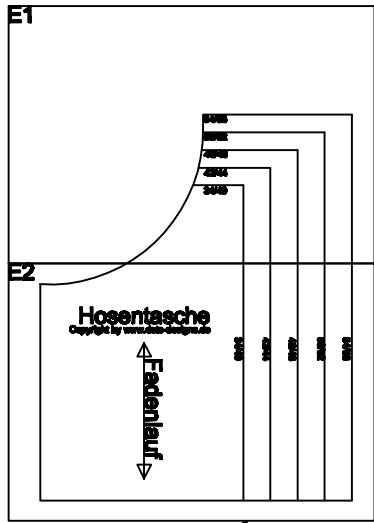


Bündchen

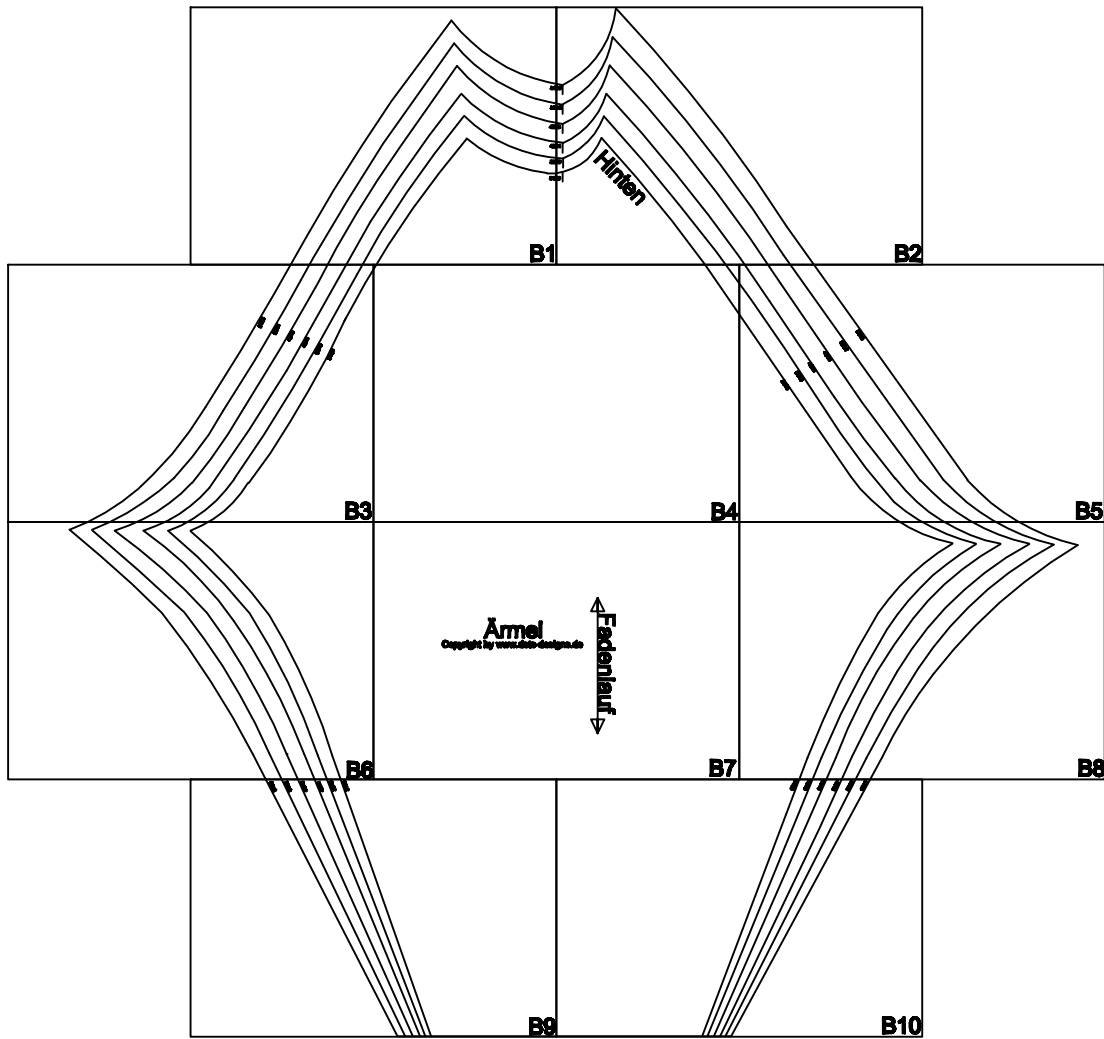




Komplette Hose "A"

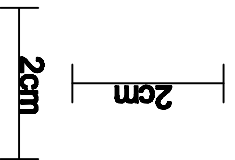


Hosentasche

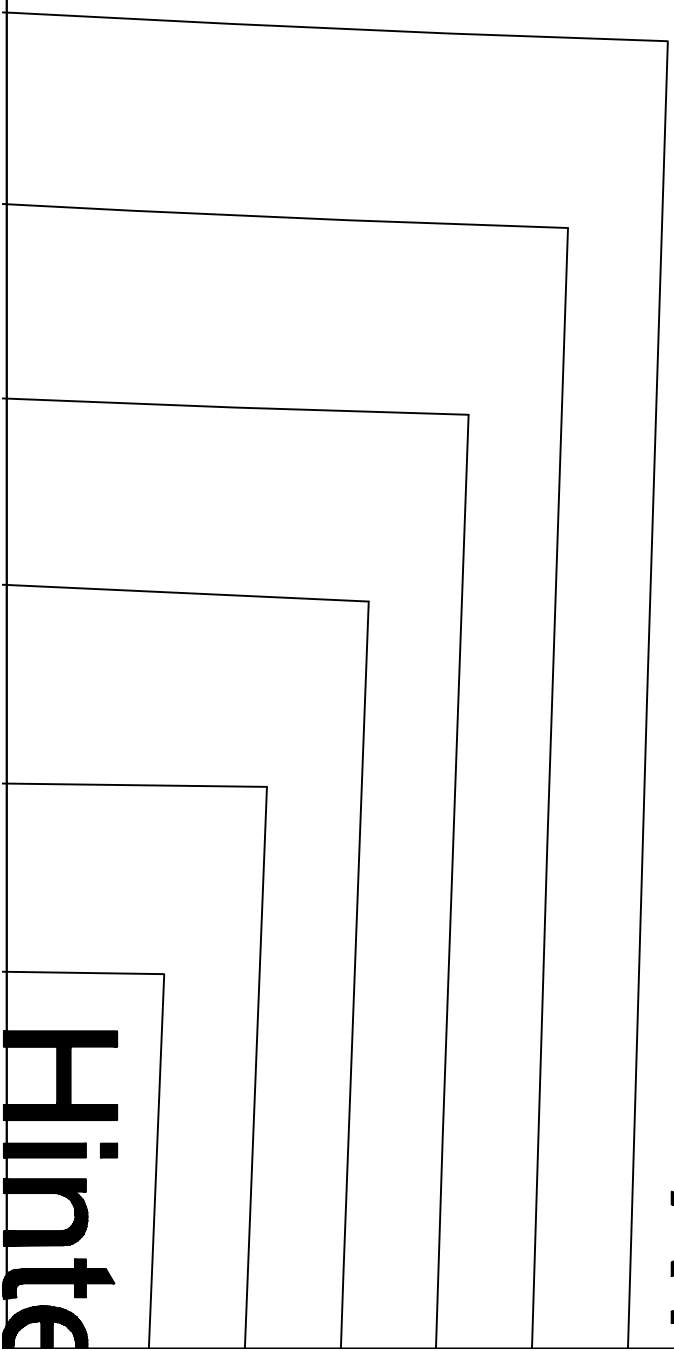


Ärmel

Kontrollmaß:



A1



Hinte

Kontrollmaß:

2cm

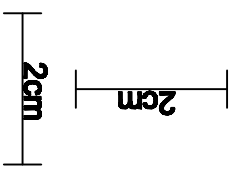
2cm

A2

	54/56
	50/52
	46/48
	42/44
	38/40
	34/36

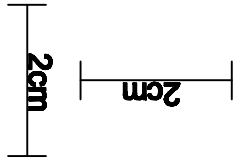
an

Kontrollmaß:



A3

Kontrollmaß:



54/56

50/52

46/48

42/44

38/40

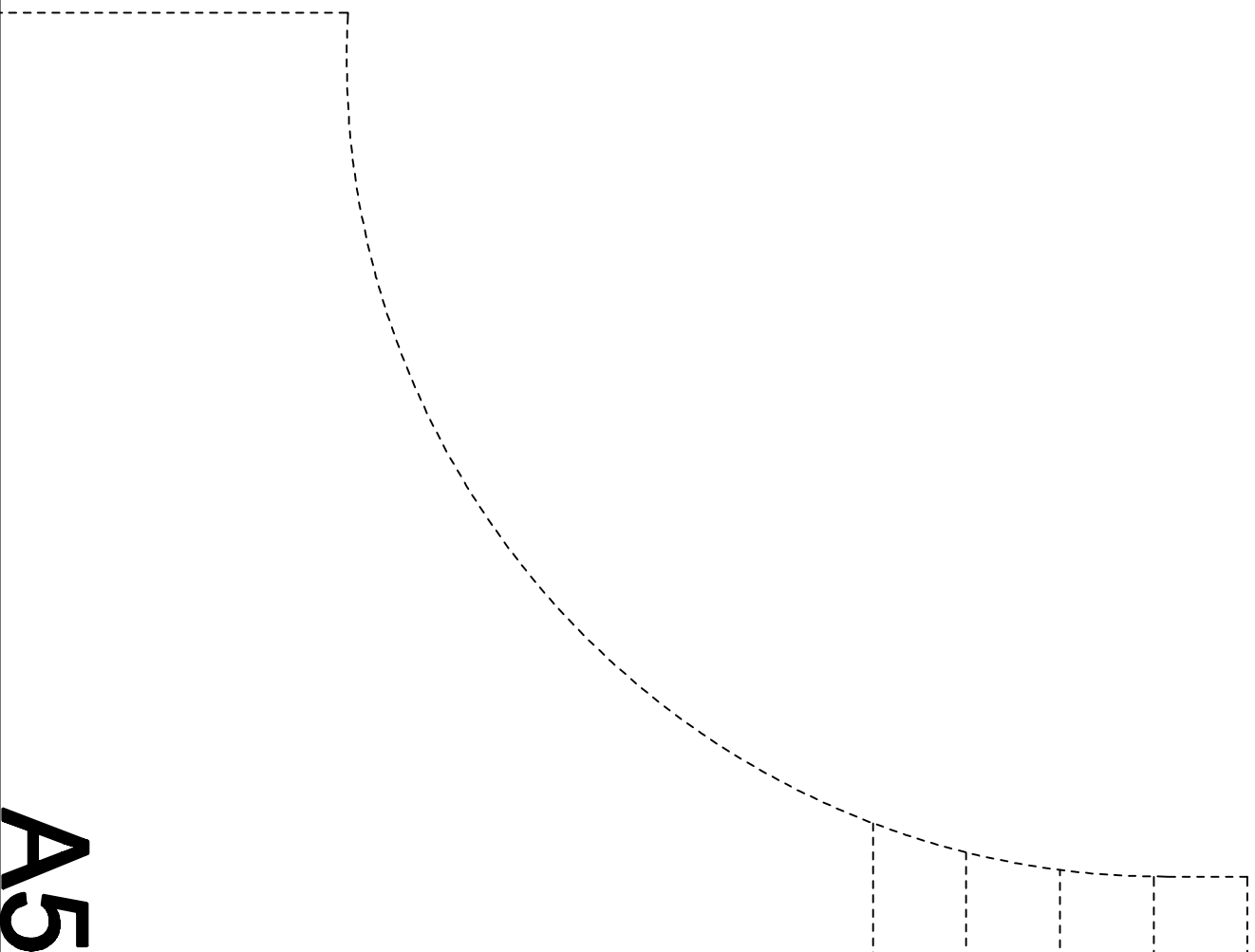
34/36

A4

Kontrollmaß:

2cm

2cm



A5

Kontrollmaß:

2cm

2cm

54/56

50/52

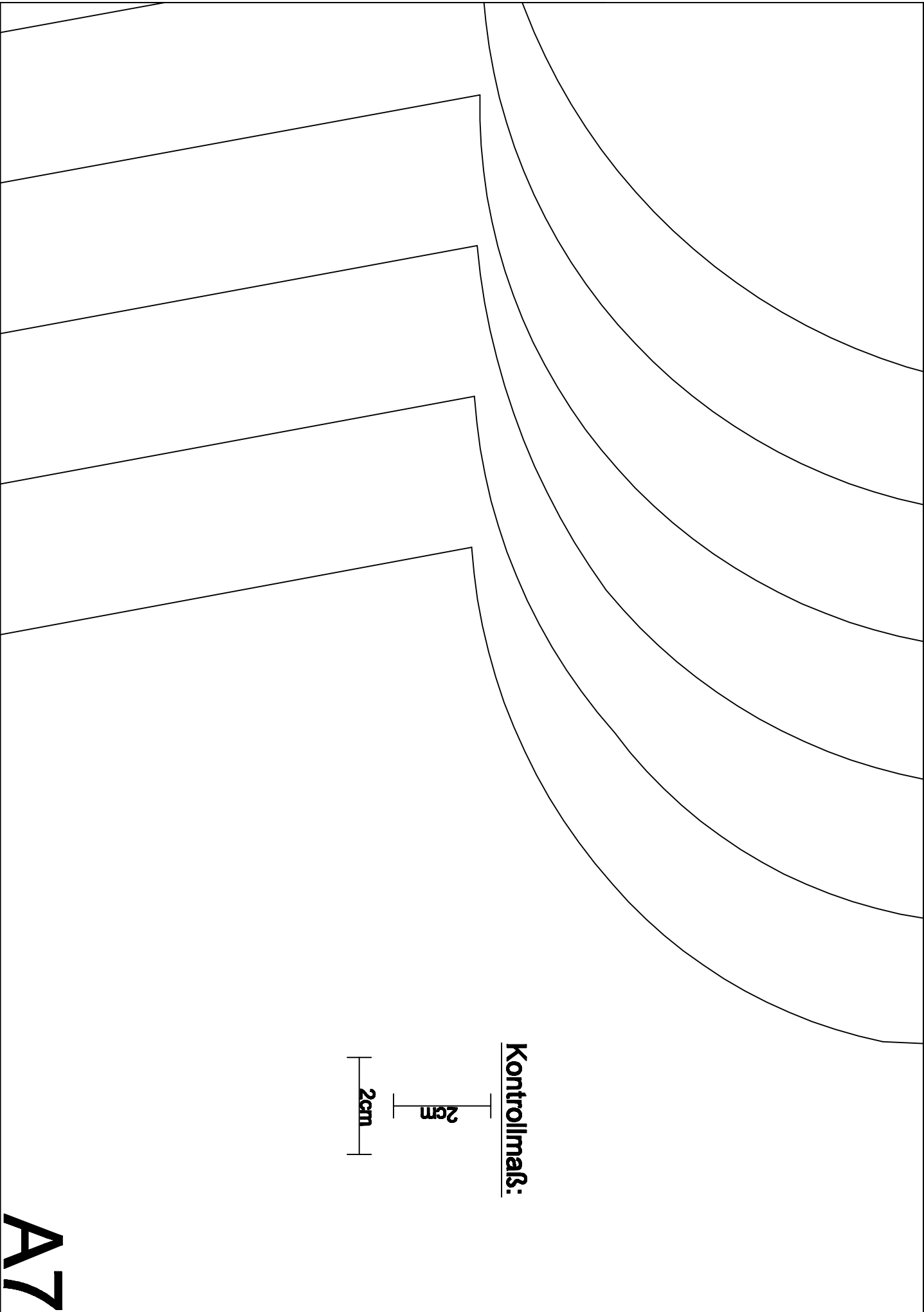
46/48

42/44

38/40

34/36

A6



Kontrollmaß:

2cm

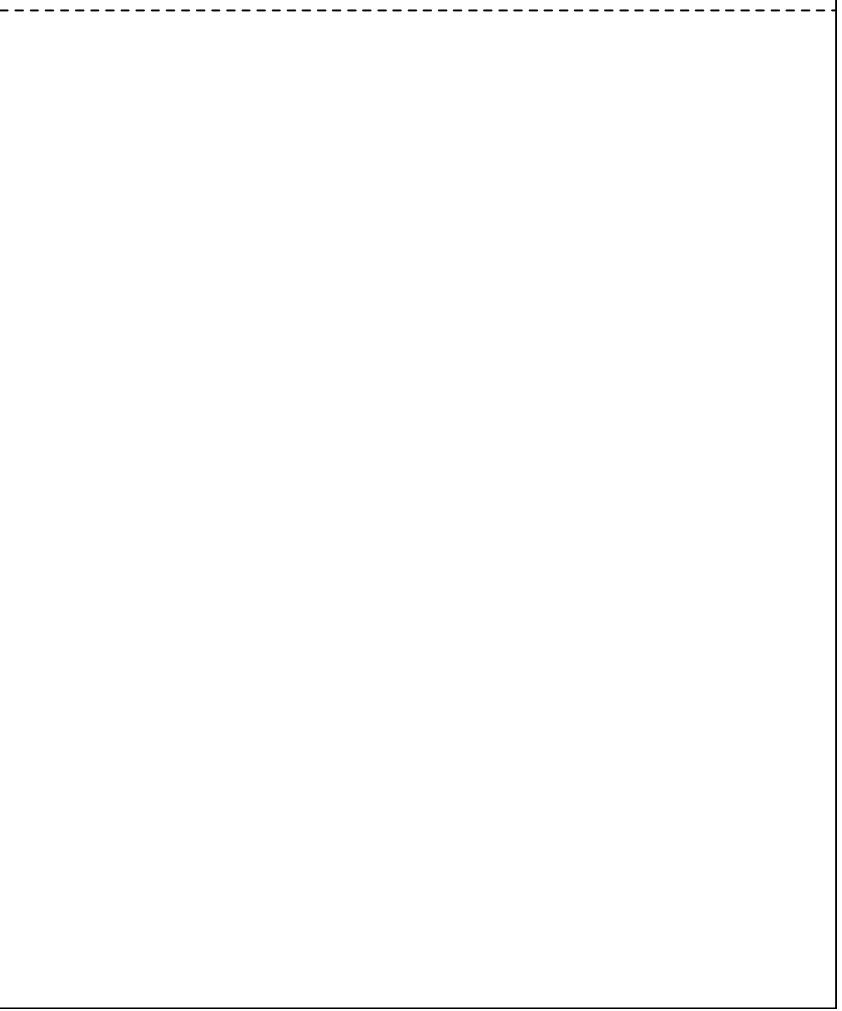
2cm

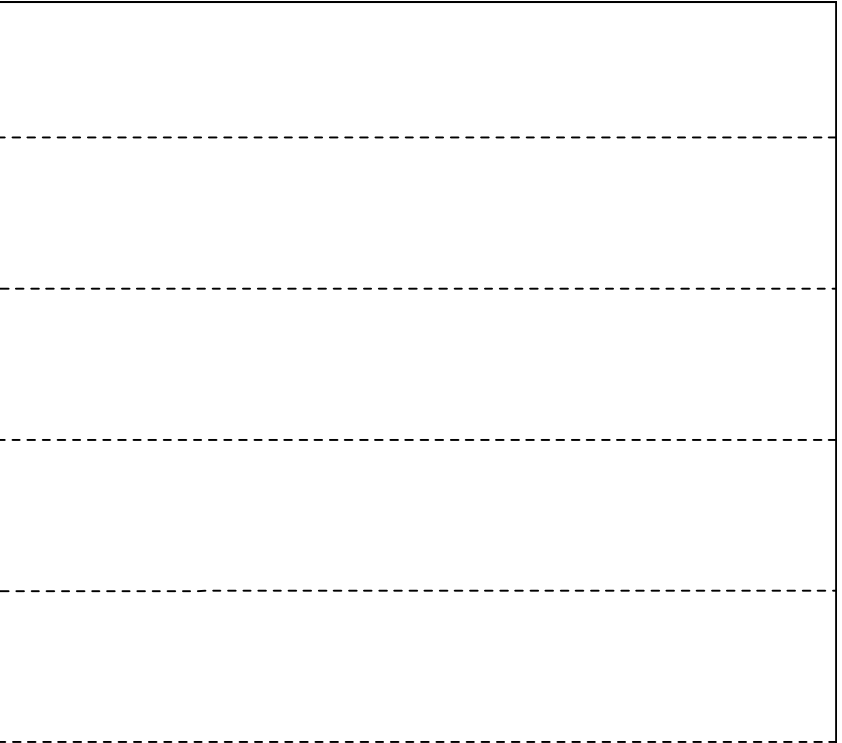
A7

Kontrollmaß:

2cm

2cm



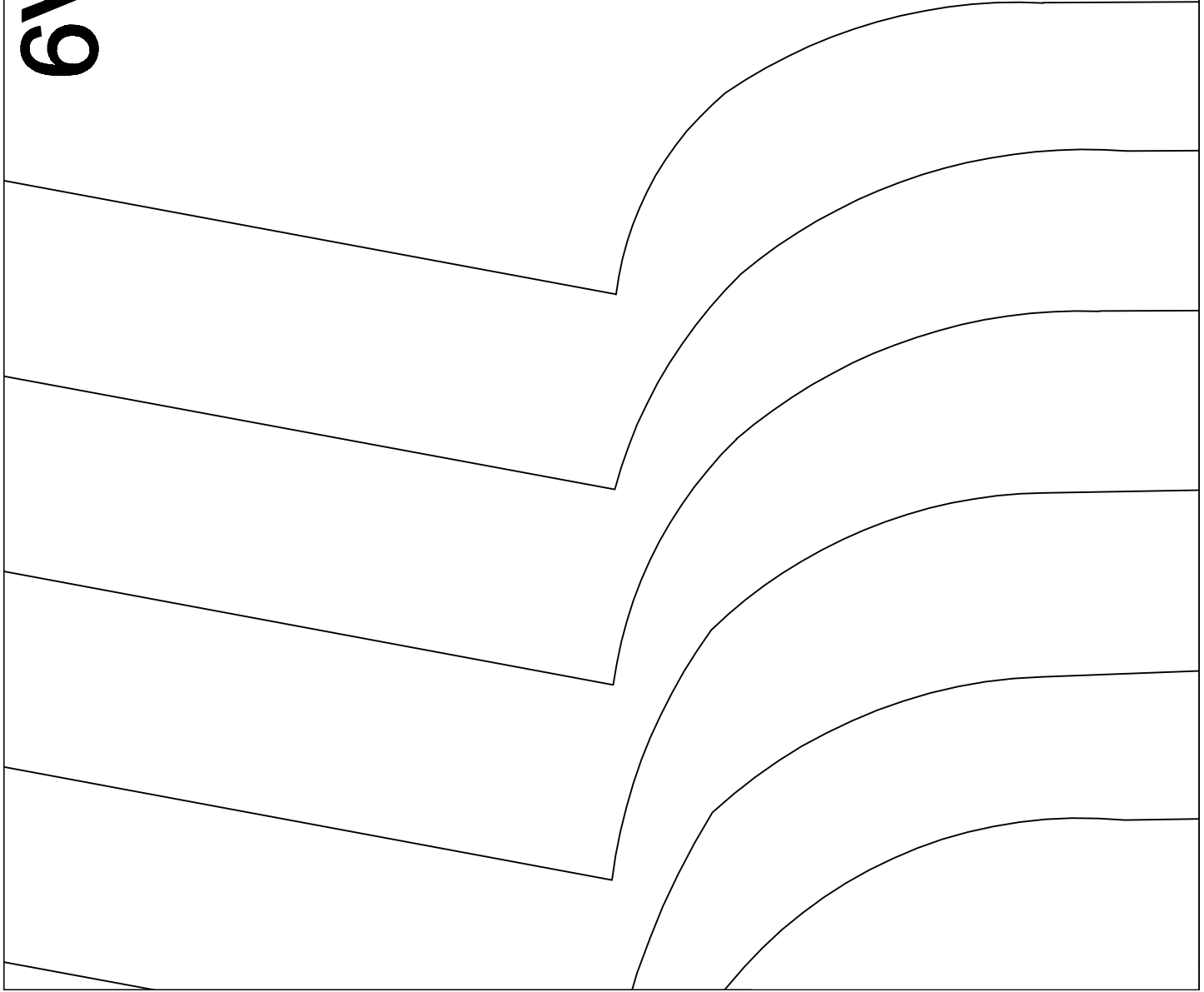


Kontrollmaß:

2cm

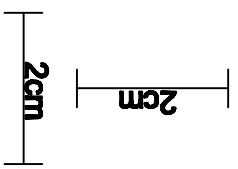
2cm

A9





Kontrollmaß:



A10

Kontrollmaß:

2cm

2cm

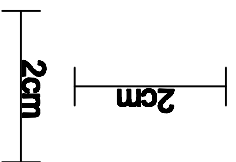
Komplette Hose

Copyright by www.dots-designs.de

↑
Faden

A11

Kontrollmaß:



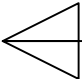
A12

Kontrollmaß:

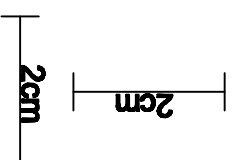
2cm

2cm

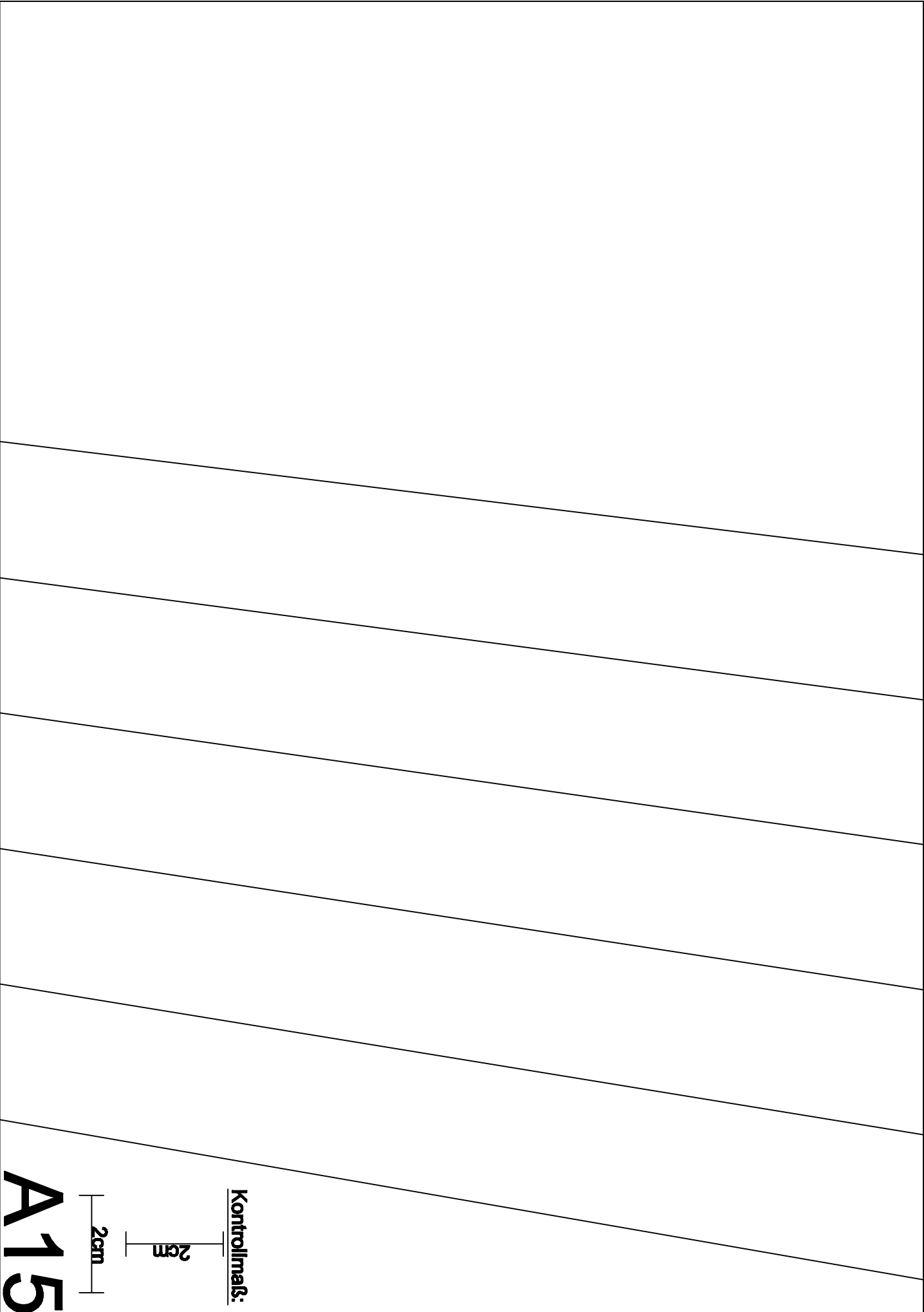
A13

lauf 

Kontrollmaß:



A14



Kontrollmaß:

2cm

2cm

A15

2cm

2cm

Kontrollmaß:

54/56

50/52

46/48

42/44

38/40

34/36

A16

Kontrollmaß:

2cm

2cm

A17

34/36

38/40

42/44

46/48

50/52

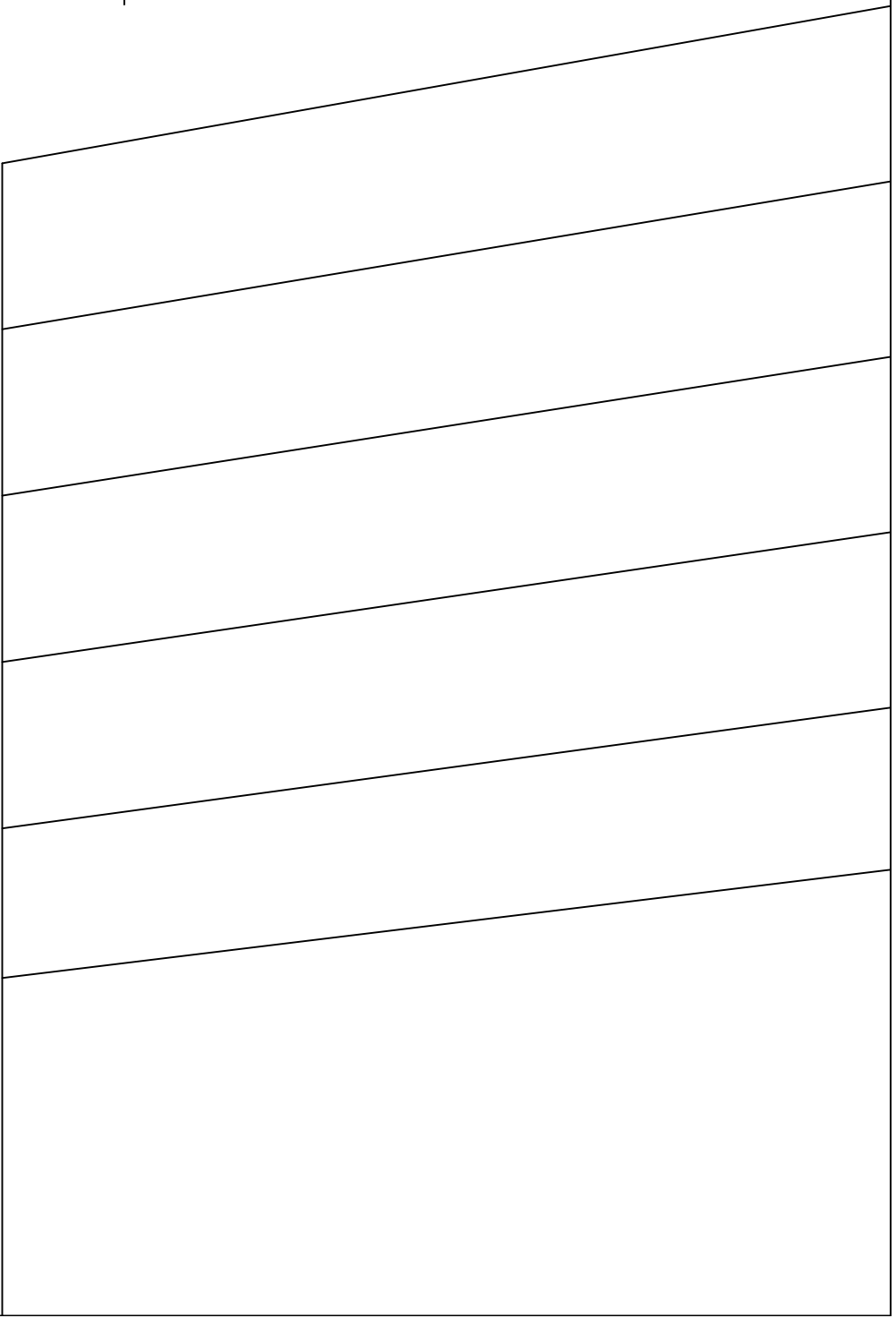
54/56

Kontrollmaß:

2cm

2cm

A18



Kontrollmaß:

2cm

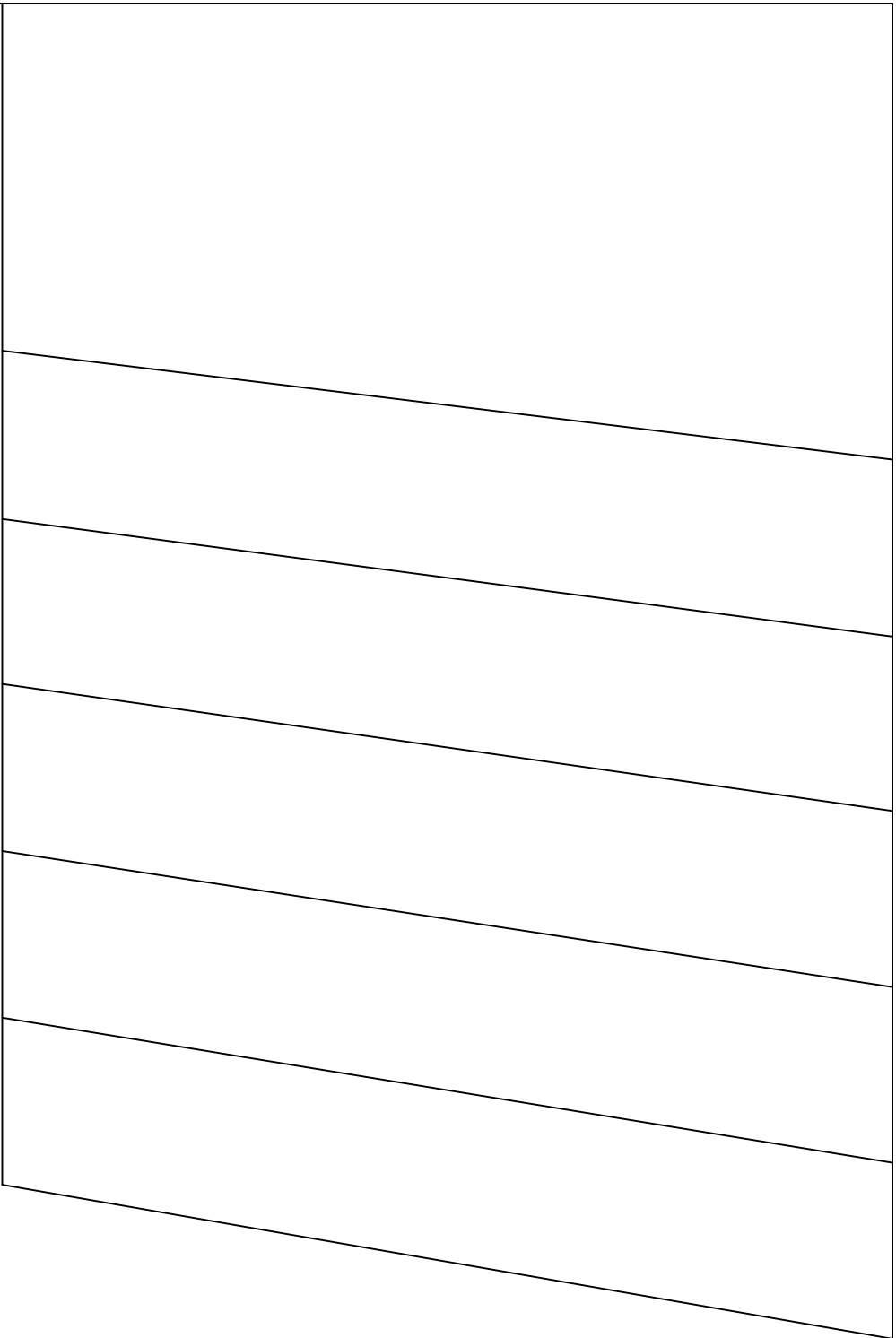
2cm

Kontrollmaß:

2cm

2cm

A20



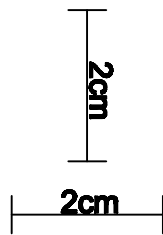
Kontrollmaß:

2cm

2cm

A21

Kontrollmaß:

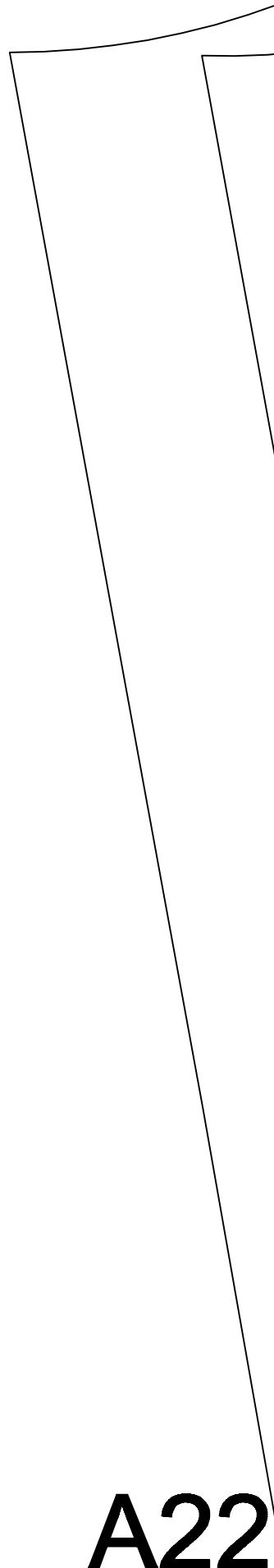


54/56
50/52
46/48
42/44
38/40
34/36

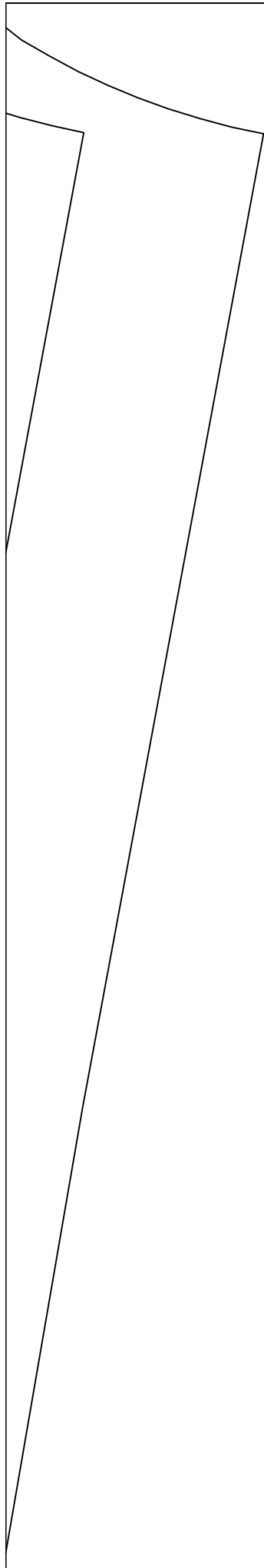
Ärmelbündchen
Copyright by www.dots-designs.de

Fadenlauf

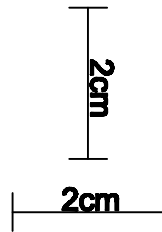
The diagram shows a rectangular sleeve cuff pattern. On the left side, there are six rows of size options: 54/56, 50/52, 46/48, 42/44, 38/40, and 34/36. A vertical dashed line runs down the center of the cuff. At the bottom, the text 'Fadenlauf' is written in a large font, with a double-headed arrow pointing left and right, indicating the direction of the thread path.



A22



Kontrollmaß:

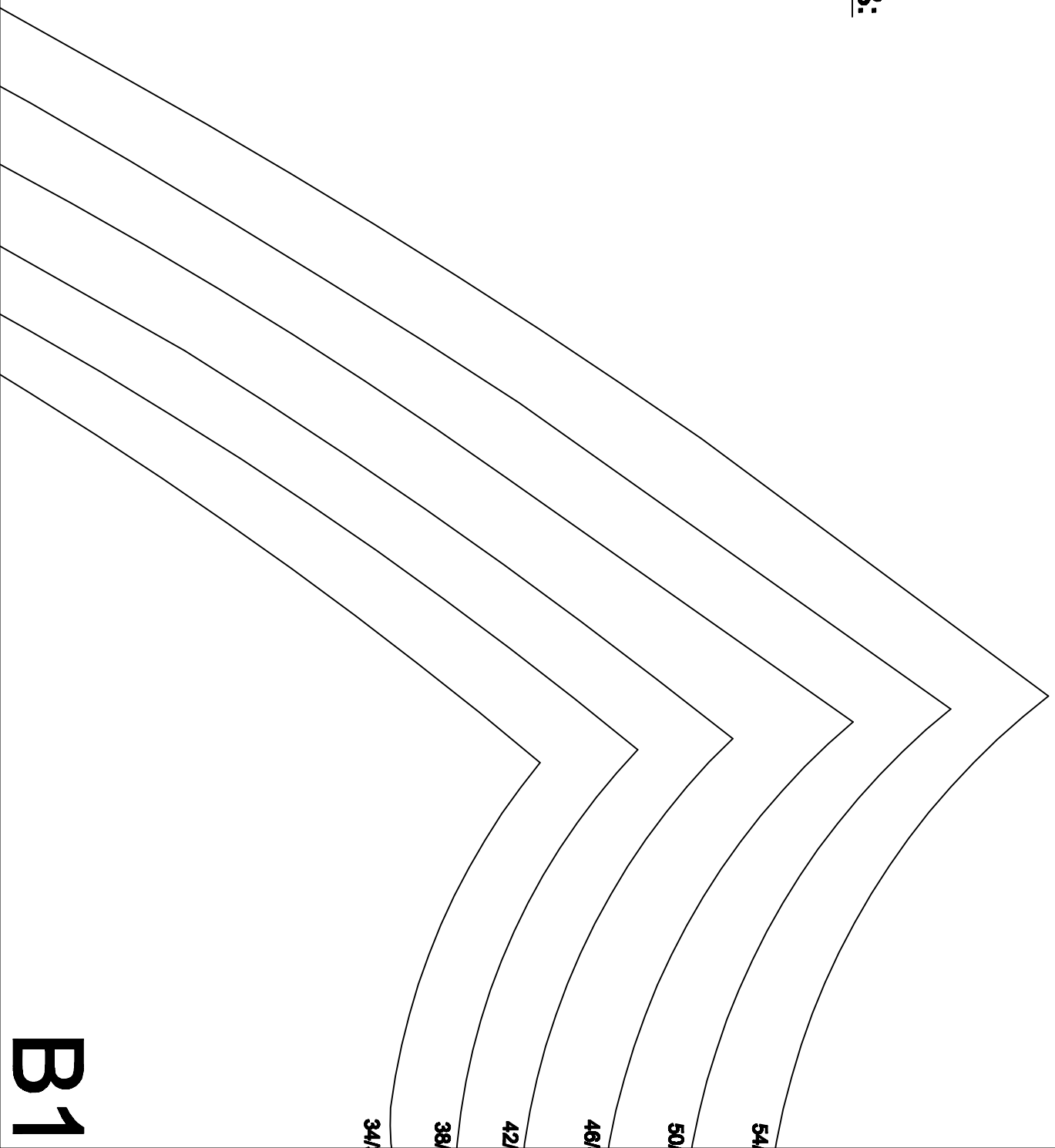


A23

Kontrollmaß:

2cm

2cm



B1

Kontrollmaß:

2cm

2cm

Hinten

56

52

48

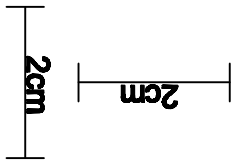
44

40

36

B2

Kontrollmaß:



54/56

50/52

46/48

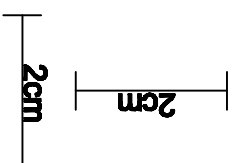
42/44

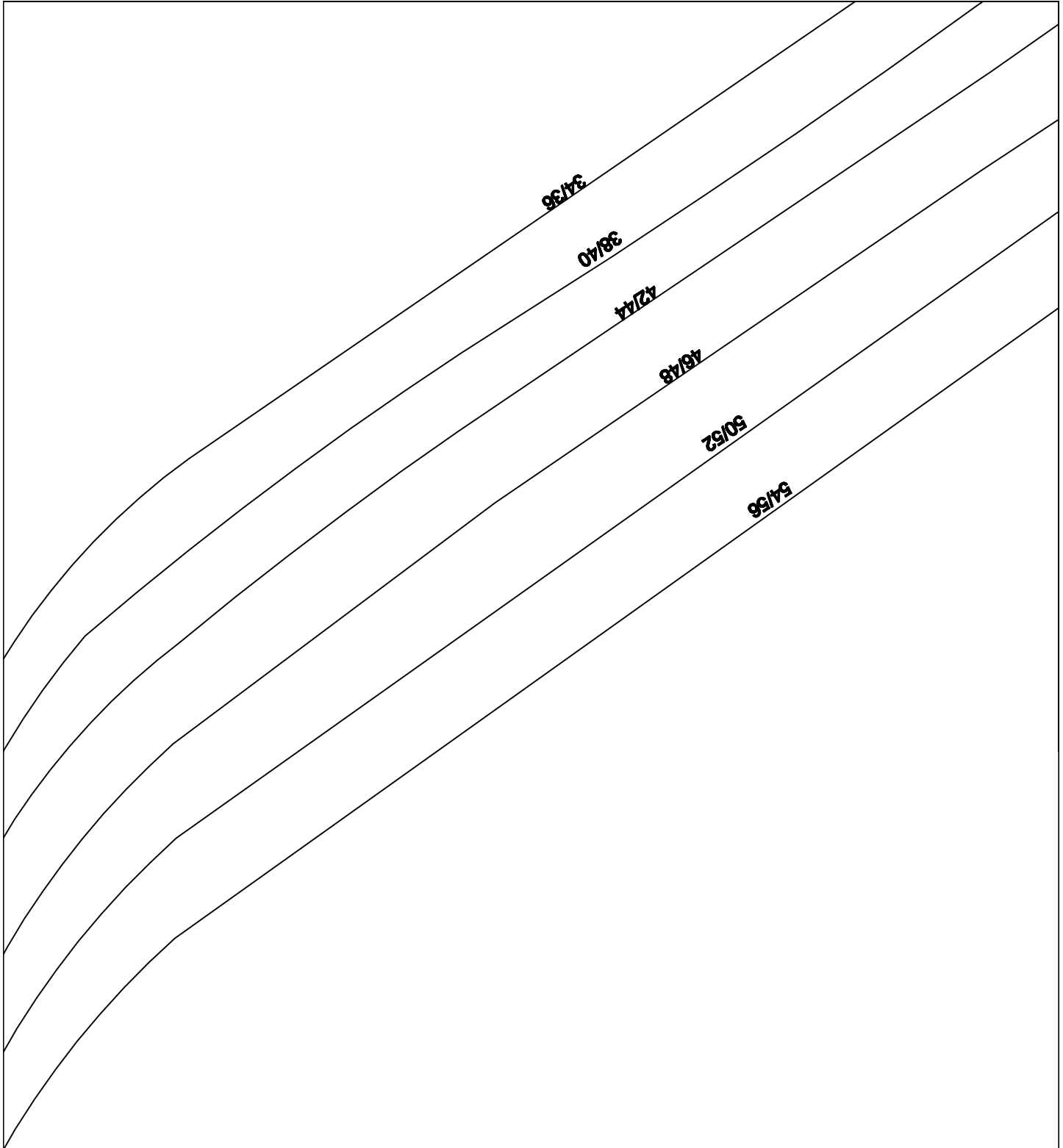
38/40

34/36

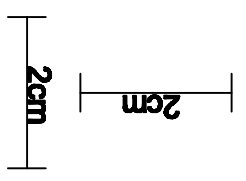
B3

Kontrollmaß:

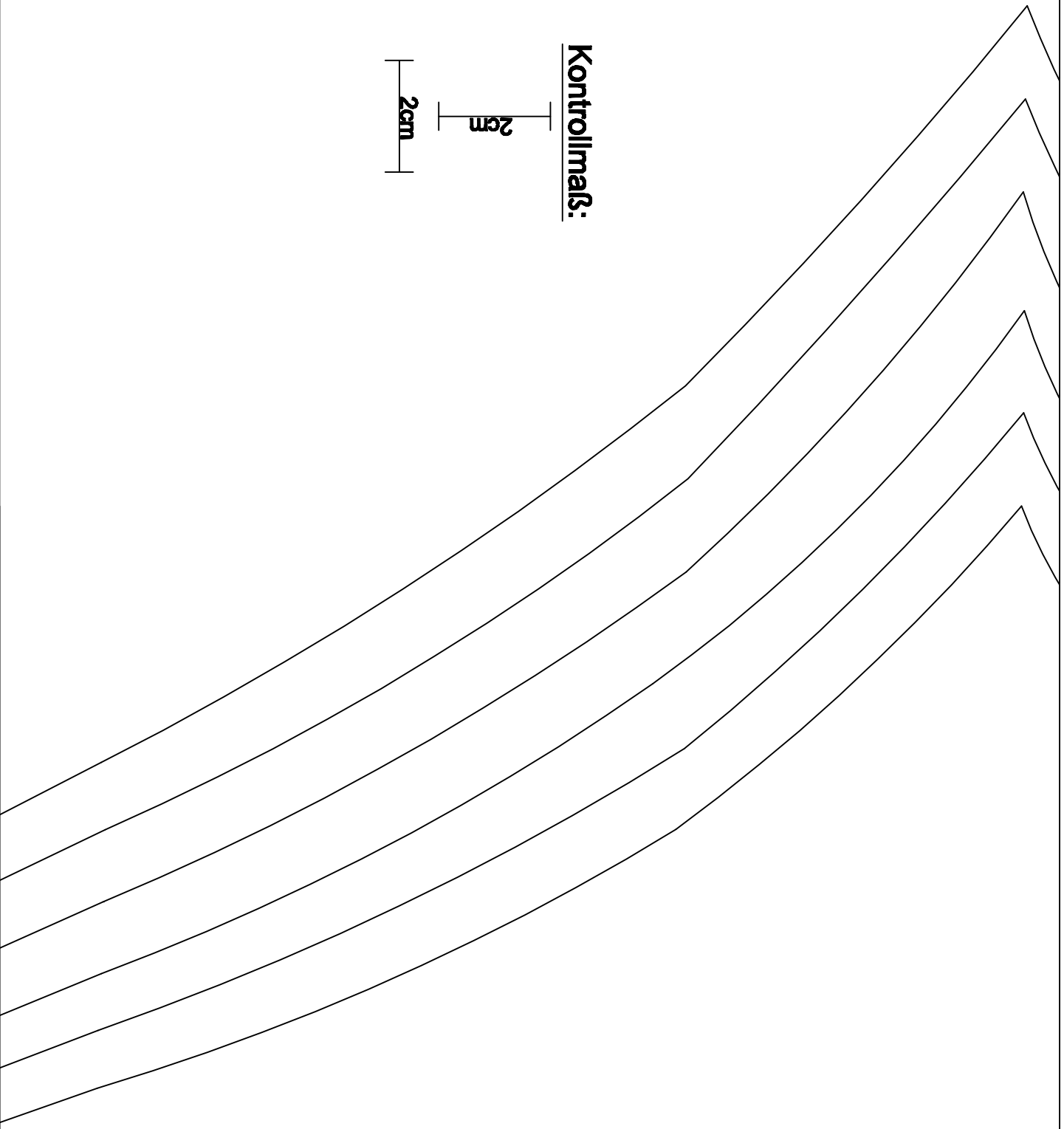




Kontrollmaß:



B5



Kontrollmaß:

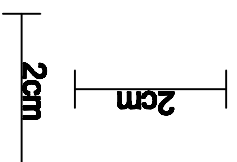
2cm

2cm

B6

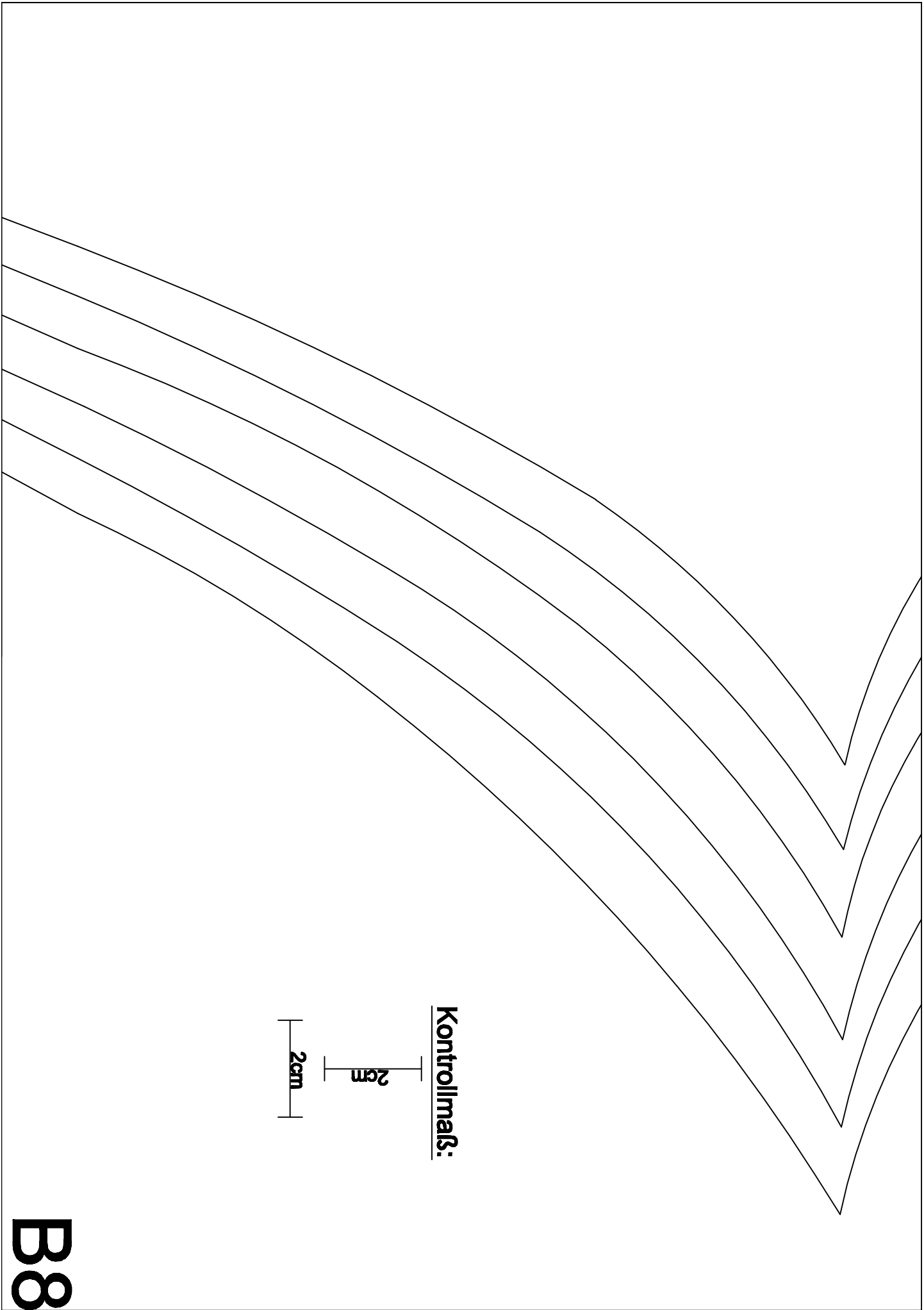
Ärmel
Copyright by www.dots-designs.de

Kontrollmaß:



Fadenlauf 

B7



Kontrollmaß:

2cm

2cm

54/56

50/52

46/48

42/44

38/40

34/36

Kontrollmaß:

2cm

2cm

B9

34/36

38/40

42/44

46/48

50/52

54/56

Kontrollmaß:

2cm

2cm

B10

54/56

50/52

46/48

42/44

38/40

34/36

Kontrollmaß:

2cm

2cm

C1

Stoff

Kontrollmaß:

2cm

2cm

34/36

38/40

42/44

46/48

50/52

54/56

C2

Kontrollmaß:

2cm

2cm

54/56

50/52

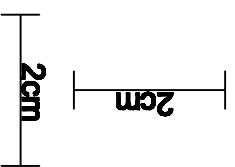
46/48

42/44

C3

bruch

Kontrollmaß:



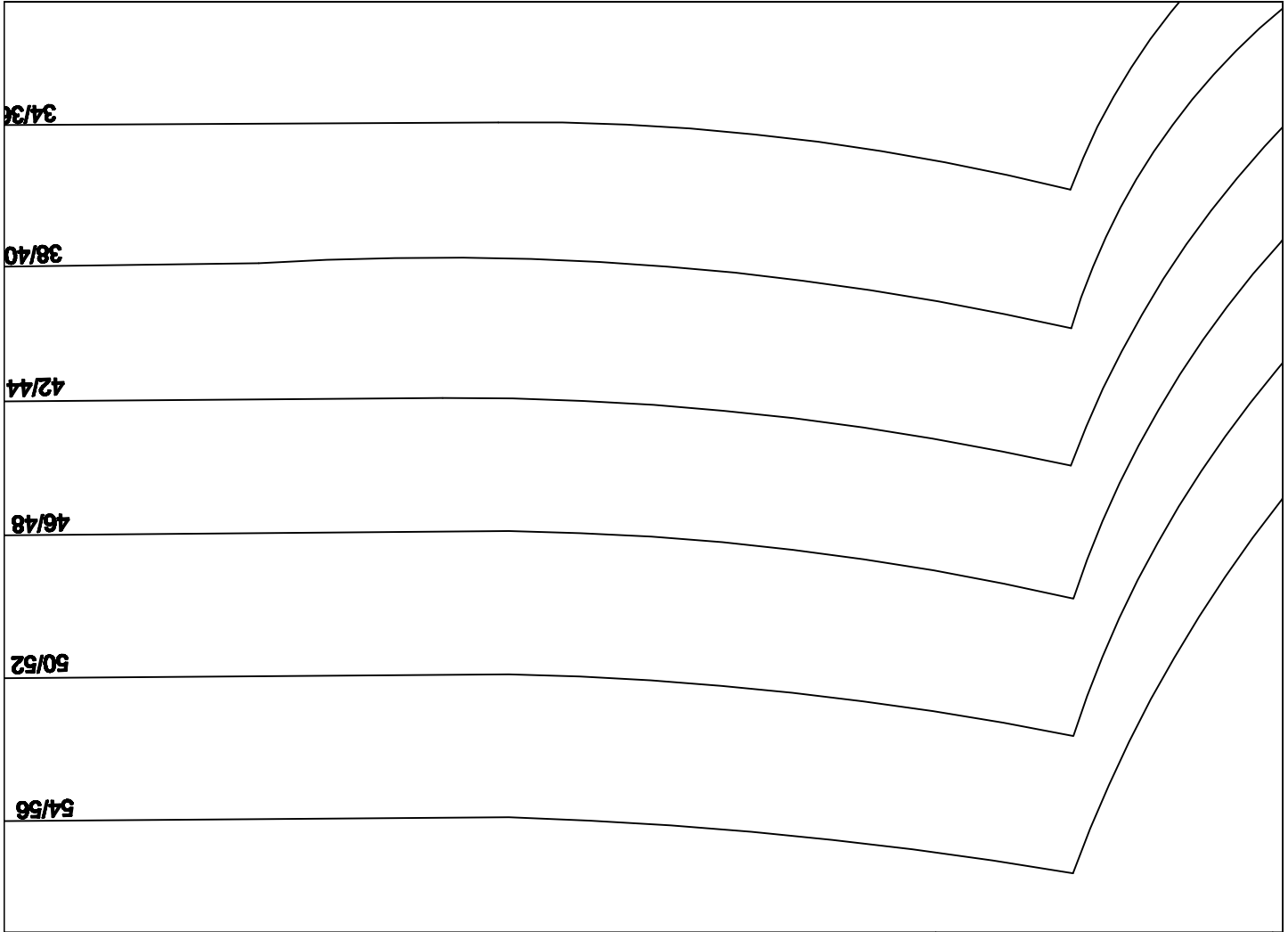
Fadenlauf

A horizontal double-headed arrow with triangular heads at both ends, pointing left and right. The word 'Fadenlauf' is written in a large, bold, black font across the center of the arrow.

Rückenteil - Shirt

Copyright by www.dots-designs.de

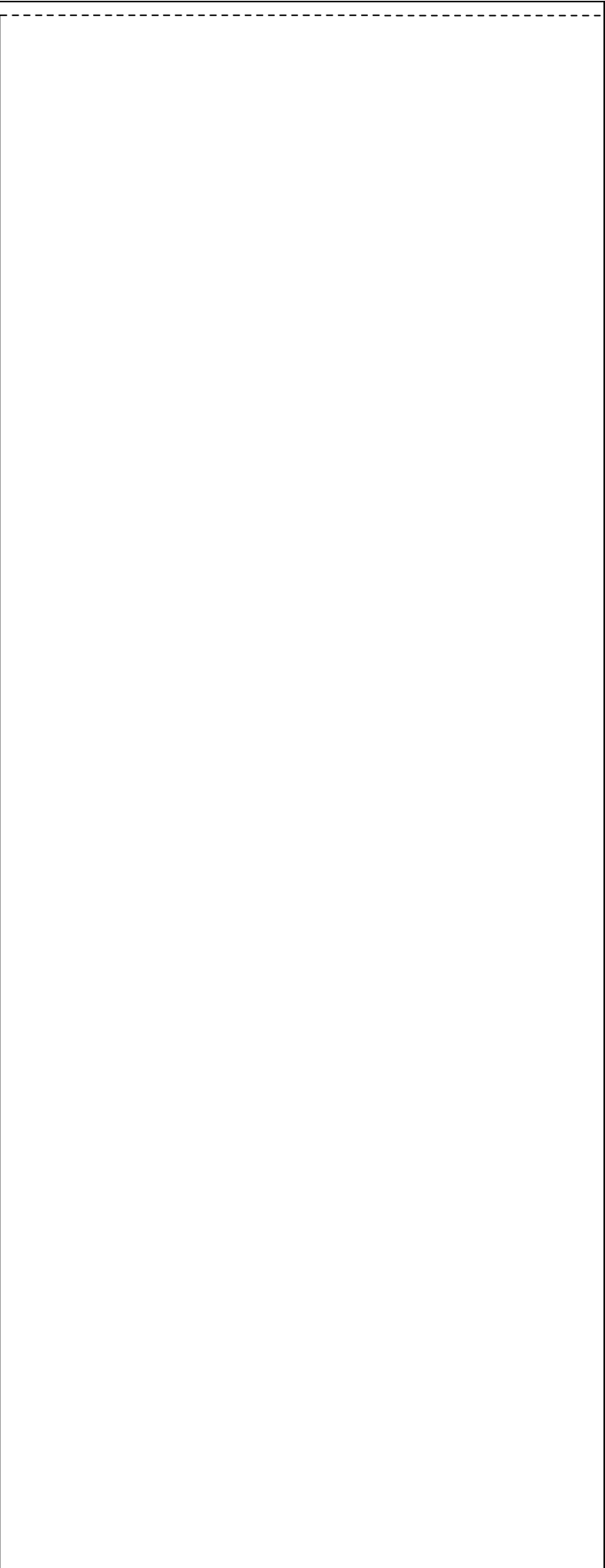
C4



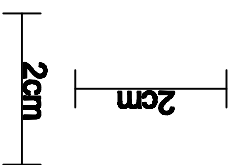
<p>Knöchelbündche Copyright by www.dots-designs.de</p>	

34/36

C5



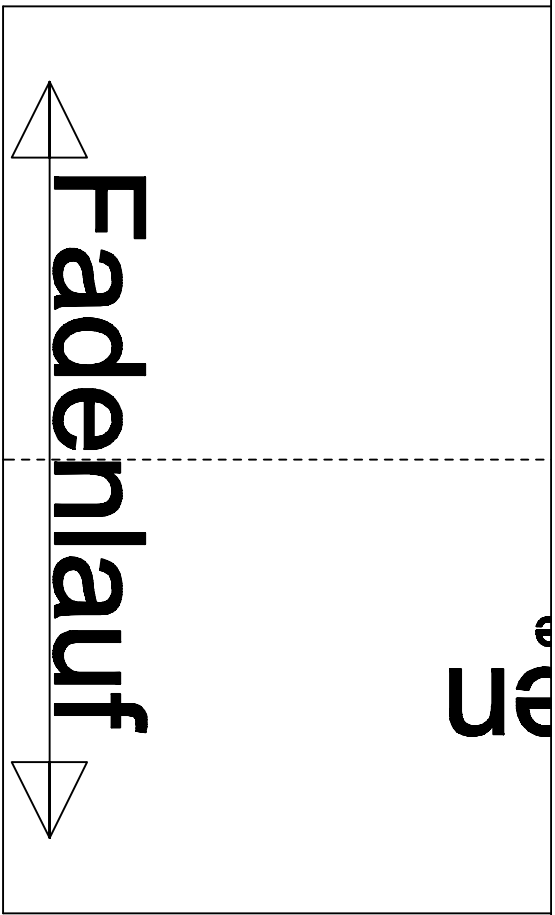
Kontrollmaß:



C6

--	--	--	--	--	--	--

en



Fadenlauf

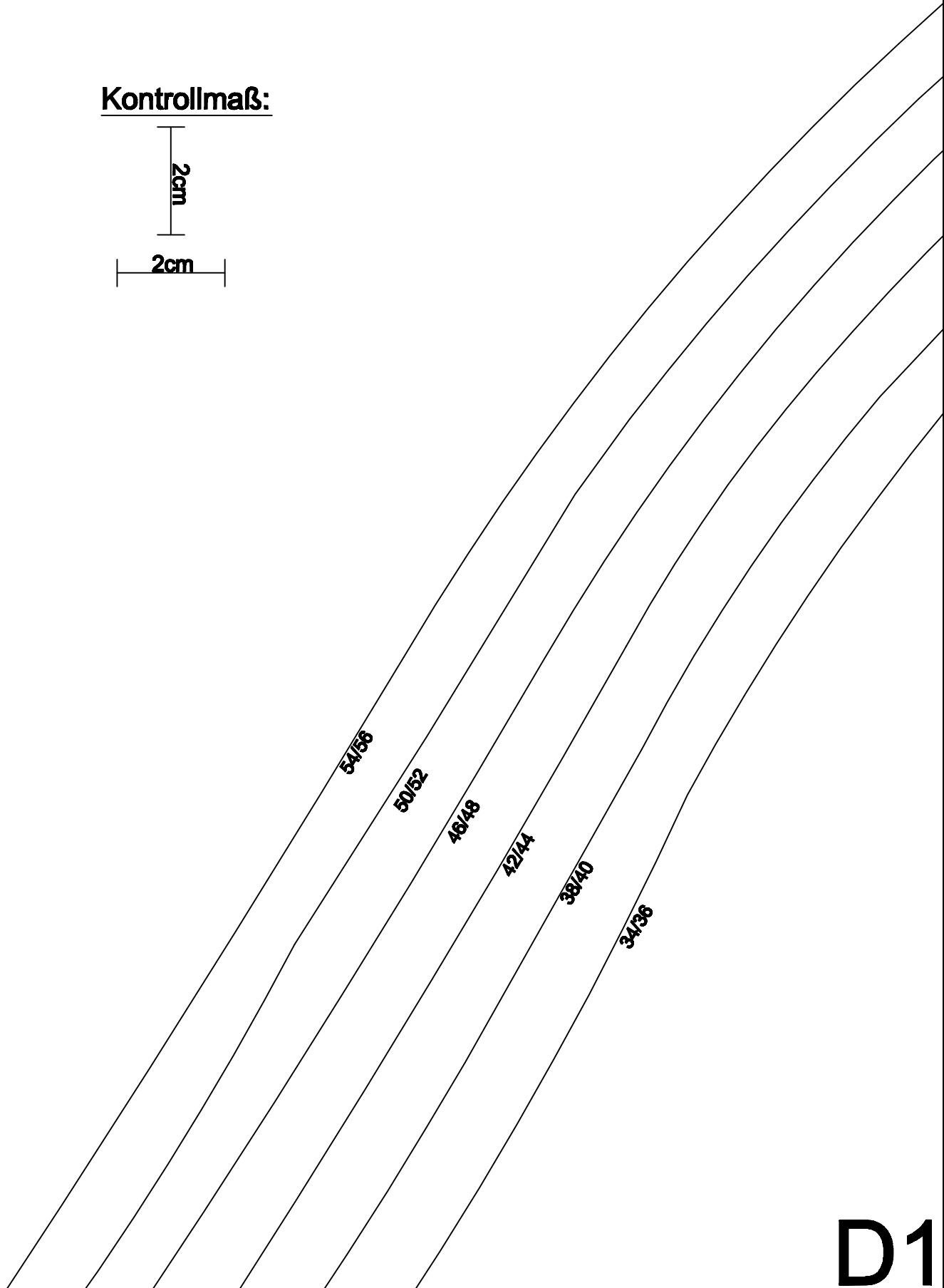
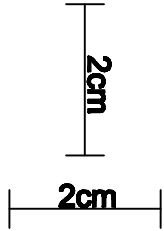
Kontrollmaß:

2cm

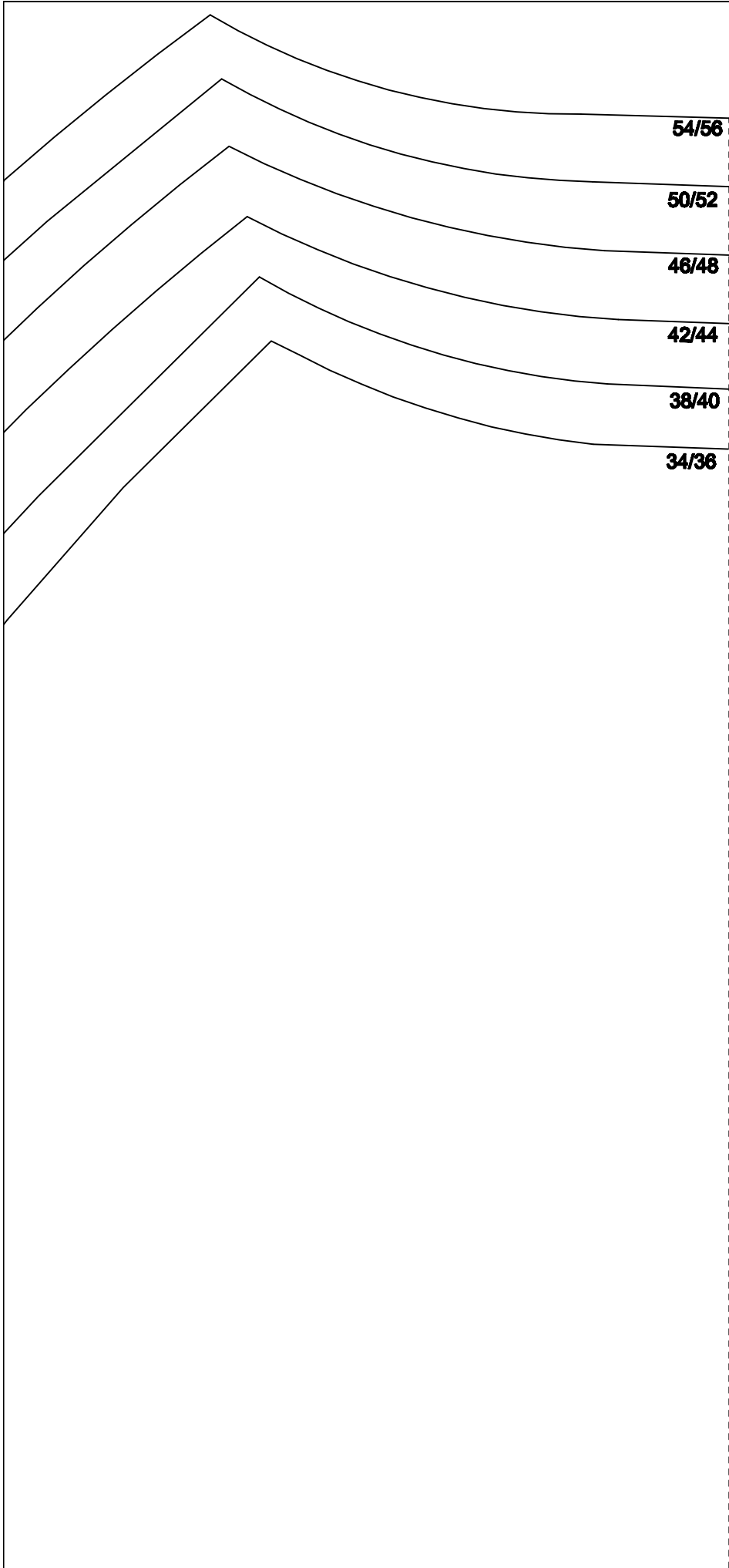
2cm

C7

Kontrollmaß:



D1



54/56

50/52

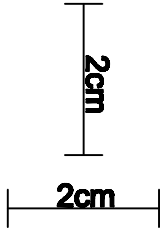
46/48

42/44

38/40

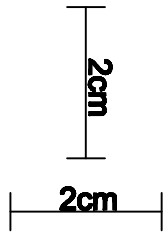
34/36

Kontrollmaß:



D2

Kontrollmaß:



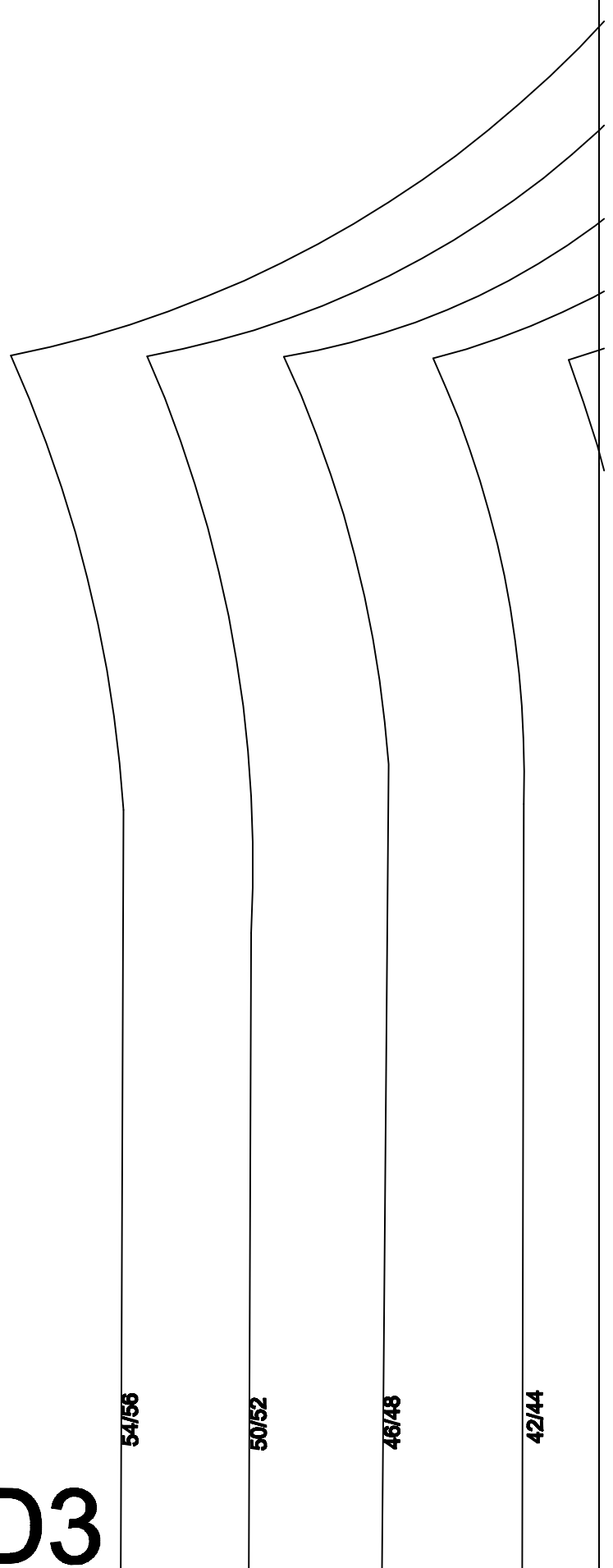
D3

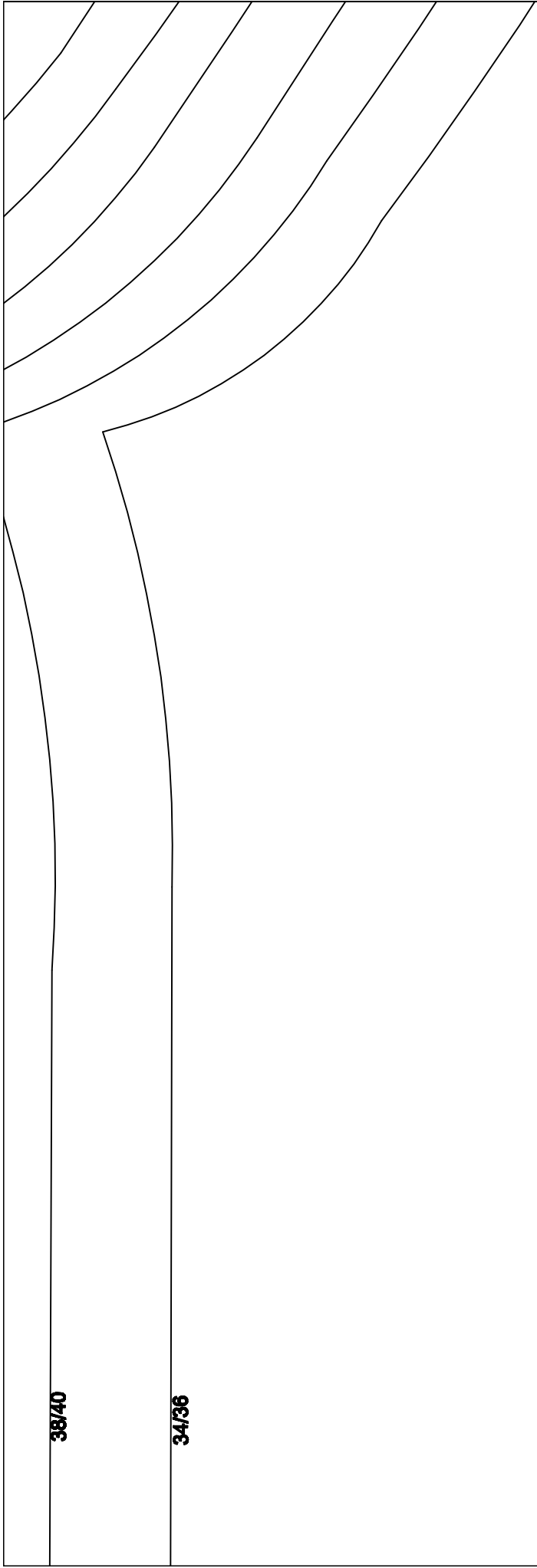
54/56

50/52

48/48

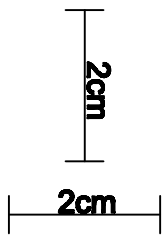
42/44





Fadenlauf

Kontrollmaß:



Vorderteil - S

Copyright by www.dots-de

38/40

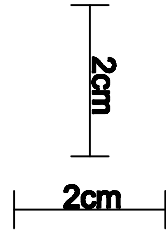
34/36

D4

Shirt
esigns.de

Stoffbruch

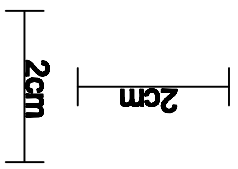
Kontrollmaß:

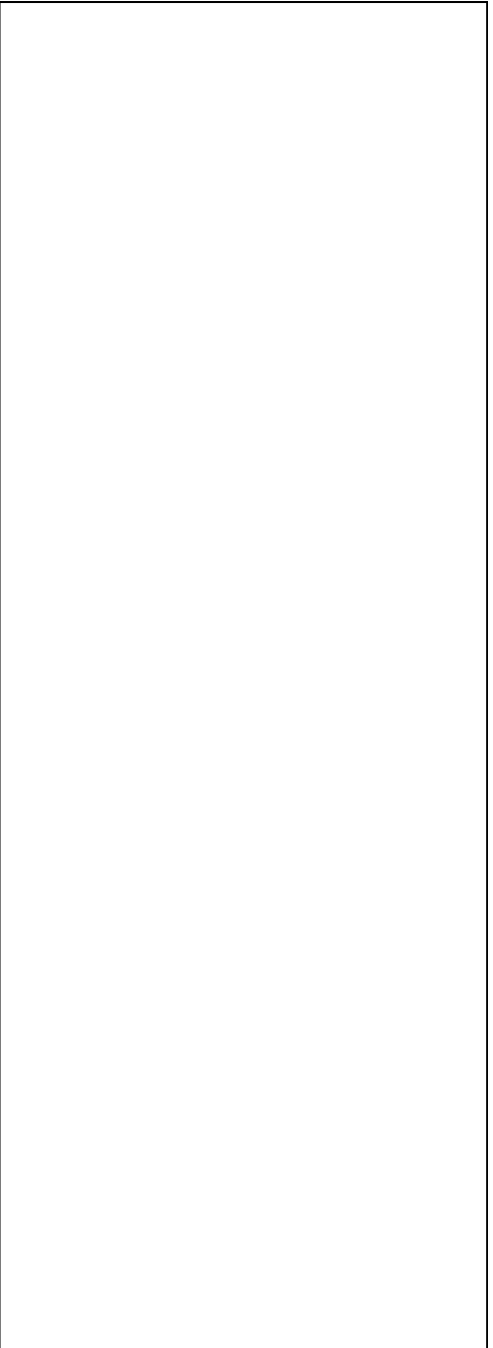


D5

--	--	--	--	--	--	--	--

Kontrollmaß:





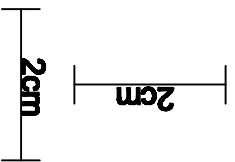
Kontrollmaß:



D7

E1

Kontrollmaß:



54/56

50/52

46/48

42/44

34/40



Hosentasche

Copyright by www.dots-designs.de

Kontrollmaß:

2cm

2cm

Fadenlauf

34/40

42/44

46/48

50/52

54/56

Kontrollmaß:

F1



54/56	
50/52	
46/48	
42/44	
38/40	
34/36	

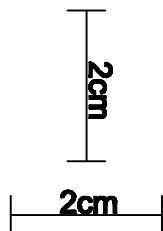
54/56
50/52
46/48
42/44

F2

38/40

34/36

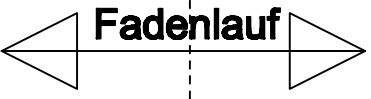
Kontrollmaß:



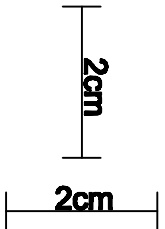
Halsbündchen
Copyright by www.dots-designs.de

F3

Saumbund
Copyright by www.dots-designs.de



Kontrollmaß:



F4

← Fadenlauf →

Kontrollmaß:

